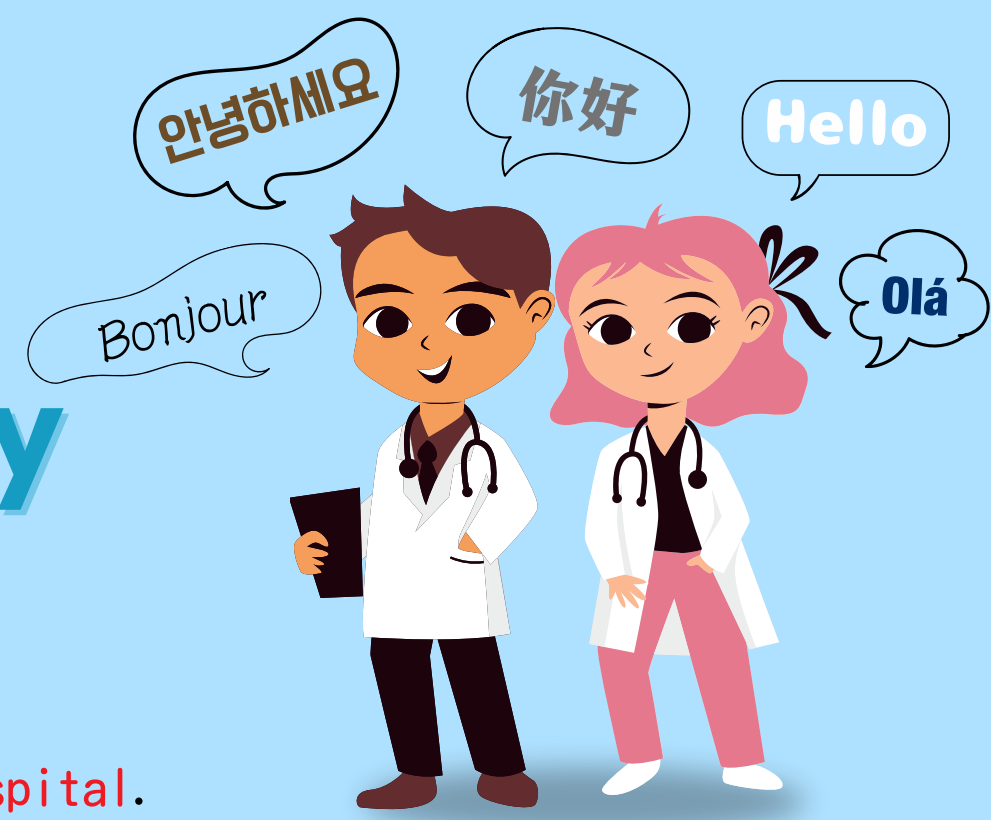


—CHIKUSHI CAMPUS AREA—

# Medical Facilities with foreign language availability



This hospital list is based on information from Fukuoka Medical Information Net (<https://www.fmc.fukuoka.med.or.jp/>) as of November 1, 2025.

Please check each hospital/clinic's website for the latest information.

Also, **please be sure to check if an appointment is required before visiting a hospital.**

- : Speciality
- : Address
- : Opening Hours
- : Phone Number
- : Website
- : Supported Language

## About Language Support Levels

The following three levels are listed for the languages supported by each medical institution.

- A** : Fluent
- B** : Daily conversational level
- C** : Not confident in conversation, but able to use words and diagrams to provide medical care

References:Fukuoka Medical Information Network(<https://www.fmc.fukuoka.med.or.jp/>)

## General Hospital

### 1. Fukuoka Tokushukai Hospital

Emergency Room / Internist / Surgery / Pediatrics / Psychiatry / Dermatology / Neurosurgery / Urology / Ophthalmology / Orthopedics / Otolaryngology / Dentist

4-5, Sugukita, Kasuga city, Fukuoka, 8160864

Mon-Fri 9:00 - 12:00

Sat 9:00 - 12:00

(Emergency Unit open 24hrs)

092-573-6622

<https://www.f-toku.jp/>

**A** : Beijing Chinese、Taiwanese **B** : English

※**The call center can help you in 21 languages**

English, Chinese, Korean, Vietnamese, Filipino, Indonesian, Thai, Nepalese, Malay, Hindi, Spanish, Portuguese, French, Russian, Cambodian, Burmese, Ukrainian.



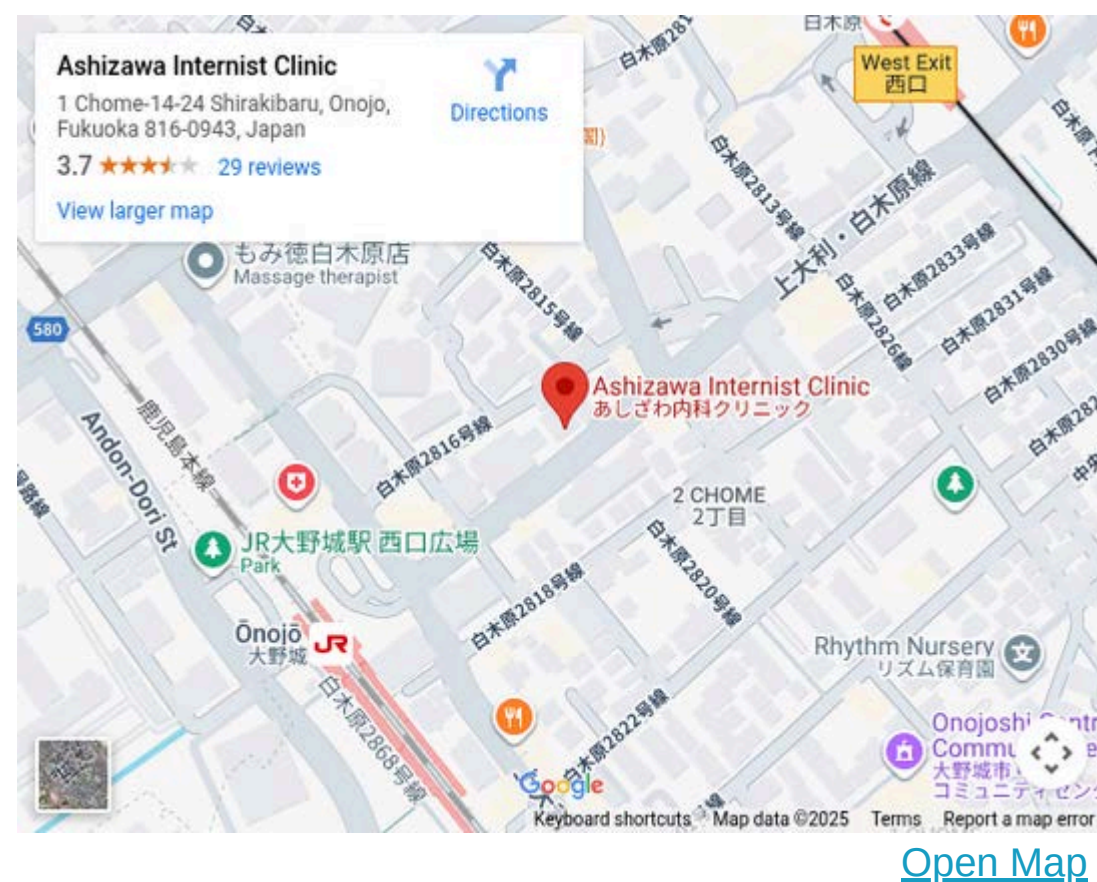
[Open Map](#)

# Internal Medicine • Cardiology

## 1. Ashizawa Internal Clinic

- 🏥 Internist
- 📍 1-14-24 Shirakibaru, Onojo city, Fukuoka, 8160943
- 🕒 Mon-Fri 9:00 - 12:30, 14:00 - 18:00  
Sat 9:00 - 12:30
- ☎️ 092-591-3928
- 🌐 <https://www.f-toku.jp/cooperation/detail.php?id=73>
- 🗣️ A: Beijing Chinese, Taiwanese  
B: English

【NOTE】 Gastroenterological is also available.



[Open Map](#)

## 2. Ichikawa Clinic

- 🏥 Internist
- 📍 1-1-55 Shirakibaru, Onojo city, Fukuoka, 8160943
- 🕒 Mon, Tue, Thu-Sat 9:00-12:30, 14:00-18:00  
Wed 9:00-12:30
- ☎️ 092-591-5525
- 🗣️ B: English

【NOTE】 Gastroenterological, Psychosomatics, and Neurology are also available



[Open Map](#)

## 3. Utsunomiya Medical Clinic

- 🏥 Internist/Respiratory Department/Allergy/Rehabilitation
- 📍 2-1-7 Mikasagawa, Onojo city, Fukuoka, 8160912
- 🕒 Mon, Tue, Thu, Fri 9:00-12:30, 14:30-18:00  
Wed 9:00-12:30, 15:00-17:00  
Sat 9:00-12:00
- ☎️ 092-982-3113
- 🌐 <https://www.umclnc.com/>
- 🗣️ B: English

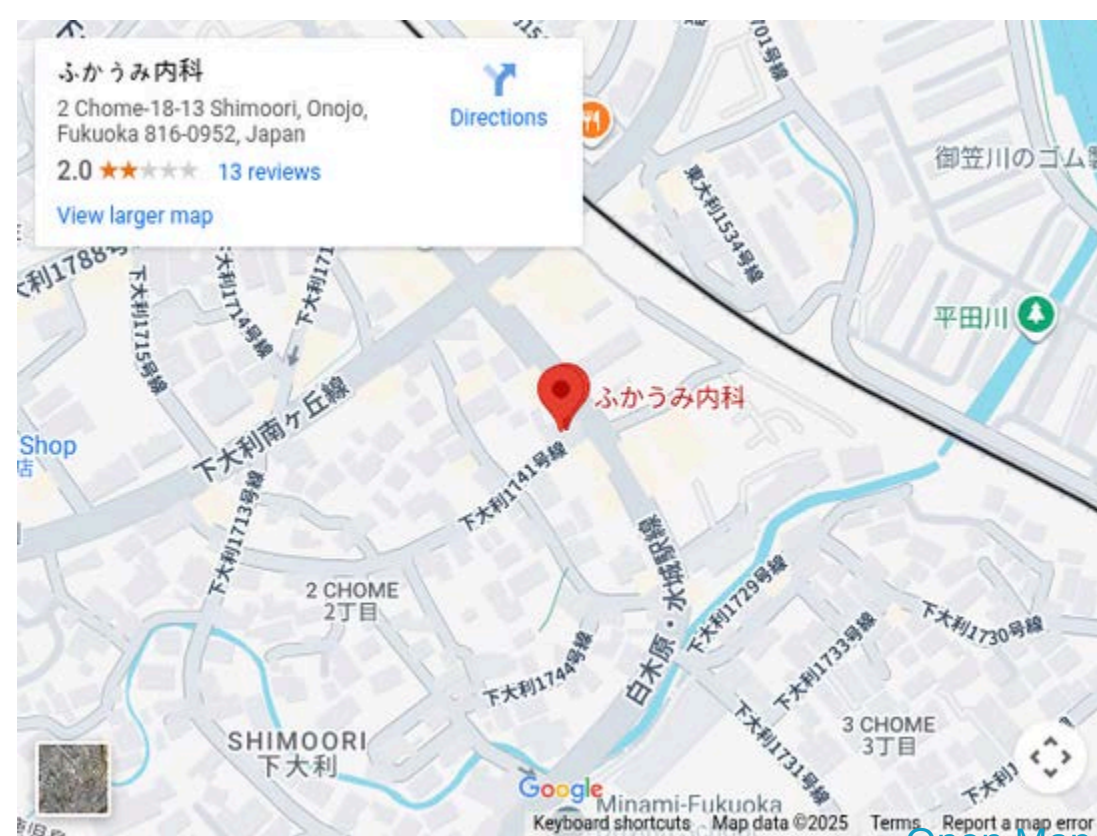
【NOTE】 Gastroenterologic is also available.



[Open Map](#)

## 4. Fukaumi Internal Clinic

- 🏥 Internist/Cardiology/Respirology
- 📍 2-18-13 Shimoori, Onojo city, Fukuoka, 8160952
- 🕒 Mon, Tue, Thu, Fri 9:00 - 12:30, 14:00 - 17:30  
Wed, Sat 9:00 - 12:30
- ☎️ 092-572-6266
- 🌐 <https://fukaumi-naika.info/>
- 🗣️ B: English



[Open Map](#)

## 5. Iharakasuga Clinic

- 🏥 Internist/cardiology/hepatology
- 📍 3-22, Takaramachi, Kasuga city, Fukuoka, 8160912
- 🕒 Mon-Wed, Fri 8:00-13:00, 14:30-17:00  
Thu, Sat 8:00-13:00
- ☎️ 092-582-1478
- 🌐 <http://iharakasuga-clinic.jp/>
- 🗣️ B: English

【NOTE】 Gastroenterology is also available.



[Open Map](#)

## 6. Kawarada Clinic

- 🏥 Internist/respirology/cardiology/allergy
- 📍 1-82-1 Sori, Kasuga city, Fukuoka, 8160813
- 🕒 Mon-Fri 9:00-12:30, 14:00-17:00  
Sat 9:00-12:30
- ☎️ 092-583-9678
- 🗣️ C: English

【NOTE】 Surgery and Orthopaedics are also available.



[Open Map](#)

# Gastroenterology

## 1. Ashizawa Internal Clinic

- 📍 1-14-24 Shirakibaru, Onojo city, Fukuoka, 8160943
- 🕒 Mon-Fri 9:00 - 12:30, 14:00 - 18:00  
Sat 9:00 - 12:30
- ☎️ 092-591-3928
- 🌐 <https://www.f-toku.jp/cooperation/detail.php?id=73>
- 🗣️ A: Mandarin, Taiwanese  
B: English

【NOTE】 Internist is also available.



[Open Map](#)

## 2. Ichikawa Clinic

- 📍 1-1-55, Shirakibaru, Onojo city, Fukuoka, 8160943
- 🕒 Mon, Tue, Thr, Fri, Sat 9:00-12:30, 14:00-18:00  
Wed 9:00-12:30
- ☎️ 092-591-5525
- 🗣️ B: English

【NOTE】 Internal, psychosomatic and neurology are also available.

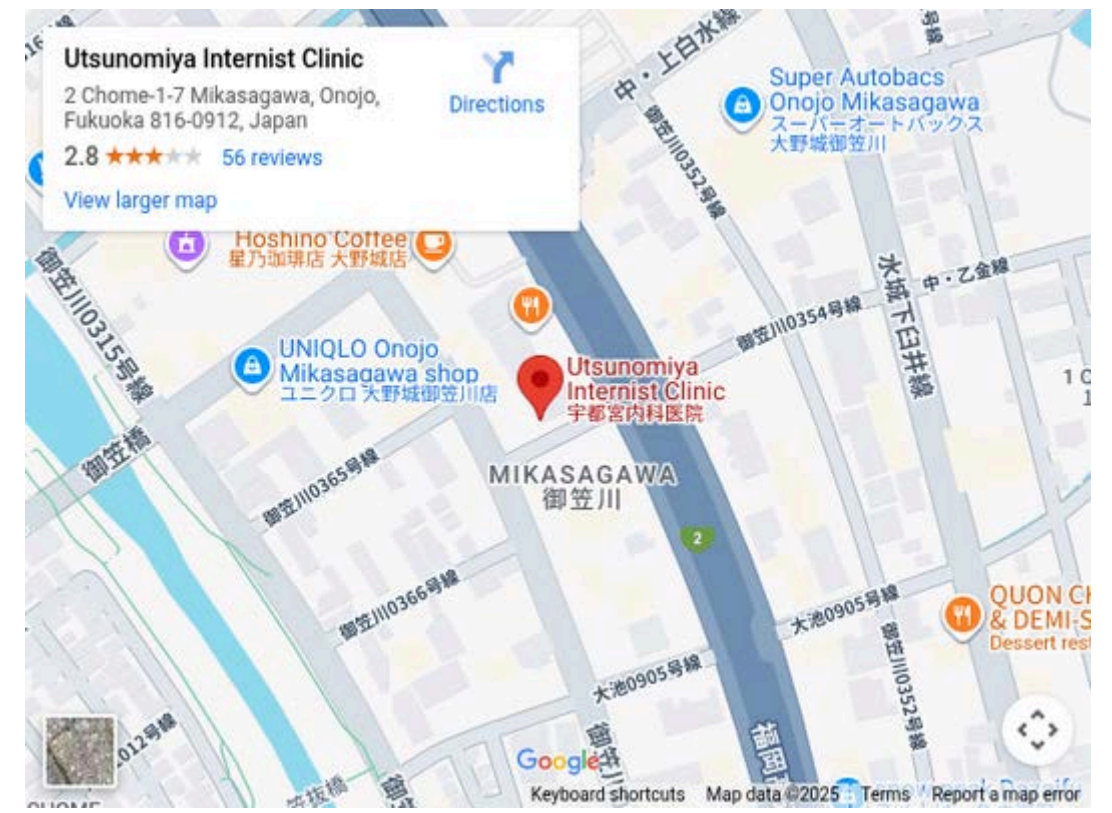


[Open Map](#)

### 3. Utsunomiya Medical Clinic

- 📍 2-1-7, Mikasagawa, Onojo city, Fukuoka, 8160912
- 🕒 Mon, Tue, Thu, Fri 9:00 - 12:30, 14:30 - 18:00  
Wed 9:00 - 12:30, 15:00-17:00  
Sat 9:00 - 12:00
- ☎️ 092-982-3113
- 🌐 <https://www.umclnc.com/>
- 🗣️ B: English

【NOTE】 Internal, respiratory, allergy and rehabilitation are also available.



[Open Map](#)

### 4. Iharakasuga Clinic

- 📍 3-22, Takaramachi, Kasuga city, Fukuoka, 8160912
- 🕒 Mon, Tue, Wed, Fri 8:00 - 13:00, 14:30 - 17:00  
Thu, Sat 8:00 - 13:00
- ☎️ 092-582-1478
- 🌐 <http://iharakasuga-clinic.jp/>
- 🗣️ B: English

【NOTE】 Internal medicine, cardiovascular medicine and hepatology are also available.

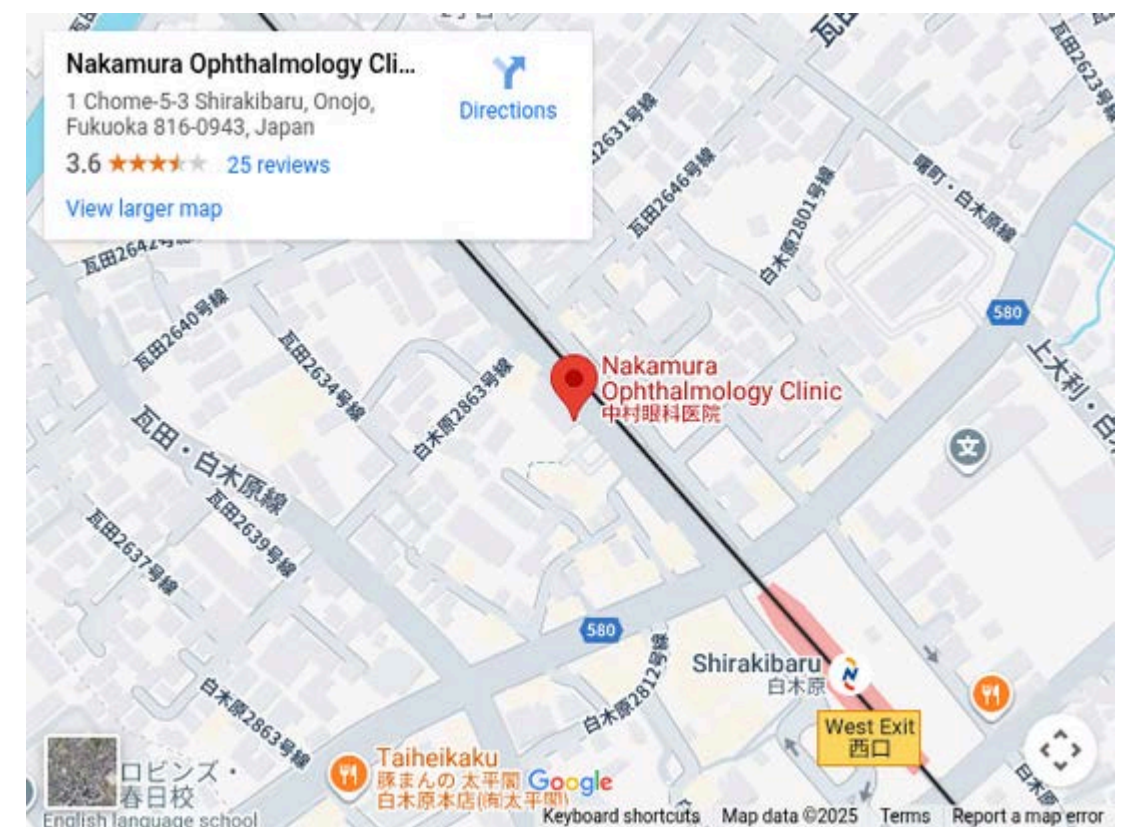


[Open Map](#)

## Ophthalmology

### 1. Nakamura Eye Clinic

- 📍 1-5-3, Shirakibaru, Onojo city, Fukuoka, 8166943
- 🕒 Mon, Tue, Thu, Fri 9:00 - 12:00, 14:00 - 17:00  
Wed, Sat 9:00 - 12:00
- ☎️ 092-591-1076
- 🌐 <http://nakamura-eye.net/>
- 🗣️ B: English



[Open Map](#)

### 2. Inoue Eye Clinic

- 📍 2-5-15 1F, Sakaemachi, Onojo city, Fukuoka, 8160924
- 🕒 Mon, Tue, Thu, Fri 9:00 - 13:00, 14:30 - 18:00  
Sat, Sun 9:00 - 13:00
- ☎️ 092-575-0031
- 🌐 <https://www7b.biglobe.ne.jp/~eye/index.html>
- 🗣️ B: English

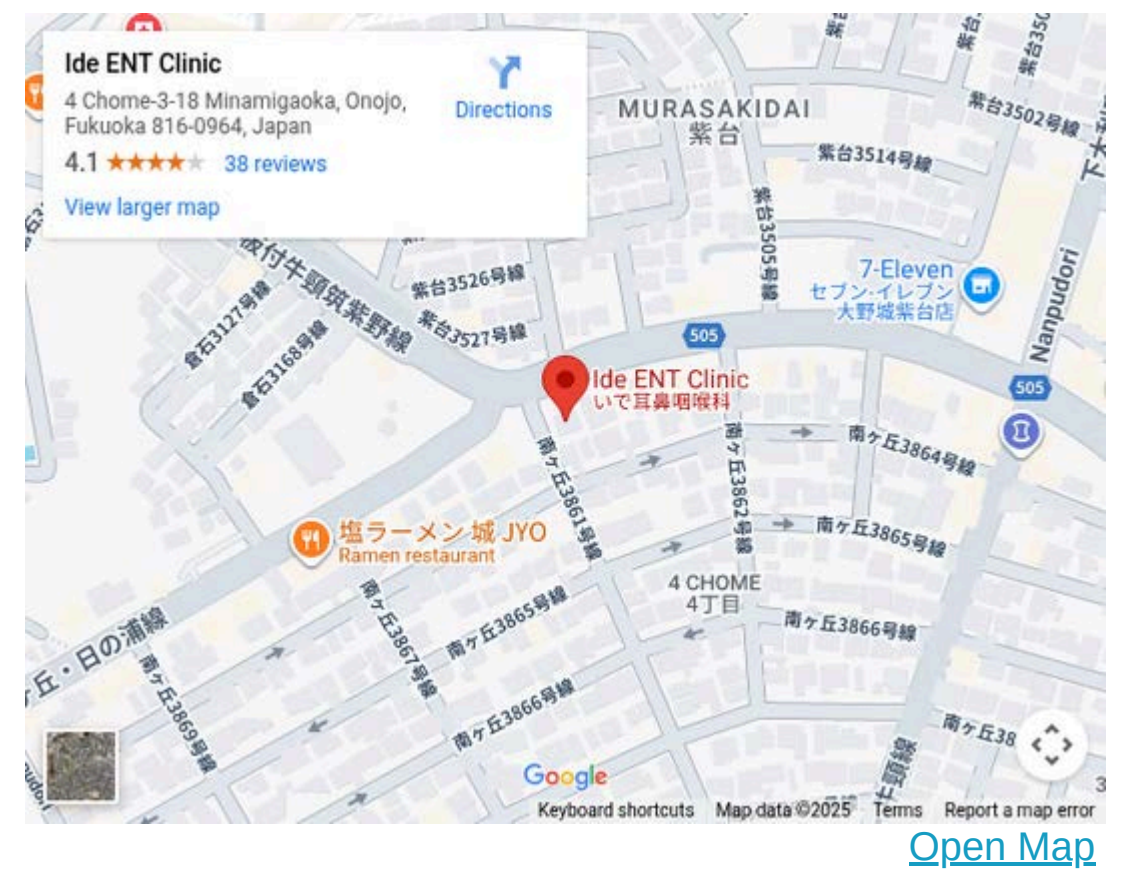


[Open Map](#)

# Otorhinolaryngology

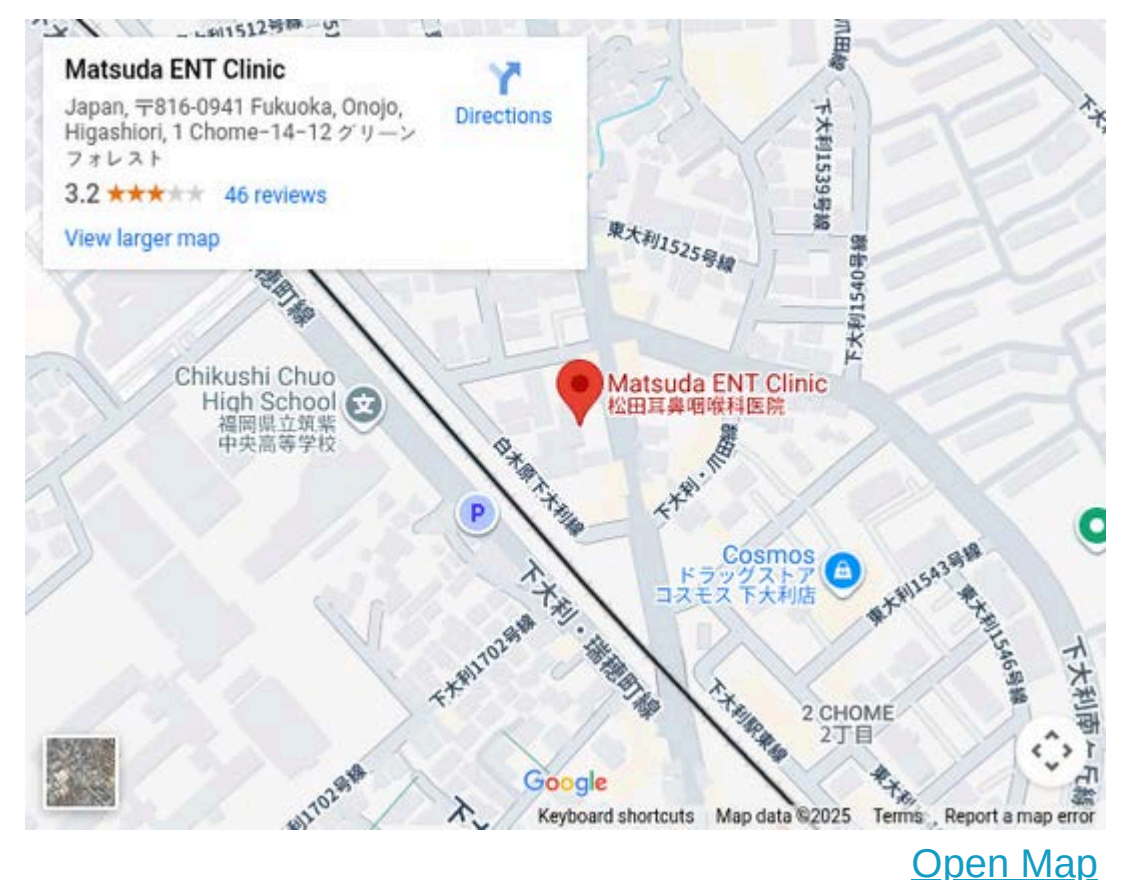
## 1. Ide ENT clinic

- 📍 4-3-18, Mimamigaoka, Onojo city, Fukuoka, 8160964
- 🕒 Mon, Tue, Thu, Fri 8:30 - 12:00, 14:00 - 17:30  
Wed, Sat 9:00 - 12:00
- ☎️ 092-596-2344
- 🌐 <https://idejibika.com/>
- 🗣️ **A:** English



## 2. Matsuda Jibiinnkouka Iin

- 📍 1-14-12, Higashioori, Onojo city, Fukuoka, 8160941
- 🕒 Mon, Tue, Wed, Fri 9:00 - 12:00, 14:00 - 18:00  
Sat 9:00 - 12:00, 13:00 - 14:00
- ☎️ 092-585-6825
- 🌐 <http://www.mikku.co.jp/matsuda/>
- 🗣️ **B:** English



## 3. Honda ENT Clinic

- 📍 3-81 2F, Kamishirozu Kasuga city, Fukuoka, 8160844
- 🕒 Mon, Tue, Thu, Fri 9:00 - 12:30, 14:30 - 18:00  
Sat 9:00 - 12:30
- ☎️ 092-584-5553
- 🌐 <https://hondajibika-fukuoka.com/>
- 🗣️ **C:** English



# Dermatology

## 1. Yanagihara Dermatology Clinic

- 📍 4-1-16, Shirakibaru, Onojo city, Fukuoka, 8160943
- 🕒 Mon, Tue, Wed, Fri 8:30-12:30, 14:00-18:30  
Thu 9:00-12:30  
Sat 9:00-12:30, 14:00-16:00
- ☎️ 092-581-0516
- 🌐 <https://www.f-toku.jp/cooperation/detail.php?id=128>
- 🗣️ **A:** Mandarin, Taiwanese  
**C:** Cantonese, English



# Dentistry

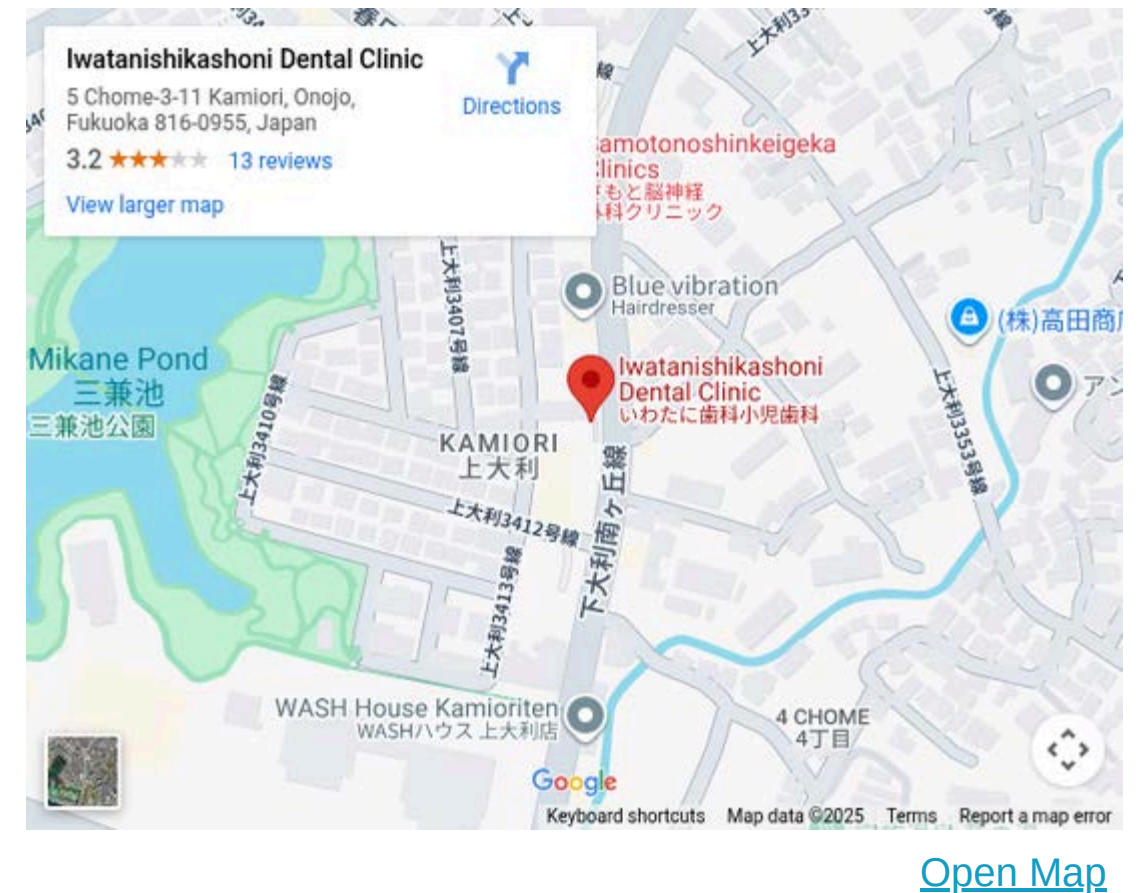
## 1. Hanada Dental Clinic

- 📍 1-18, Chikushidai, Kasuga city, Fukuoka, 8160822
- 🕒 Mon, Tue, Thu, Fri 9:00-13:00, 14:00-18:00  
Wed, Sat 9:00-14:00
- ☎️ 092-571-5510
- 🌐 <https://hanada-dental.net/>
- 🗣️ **A:** English



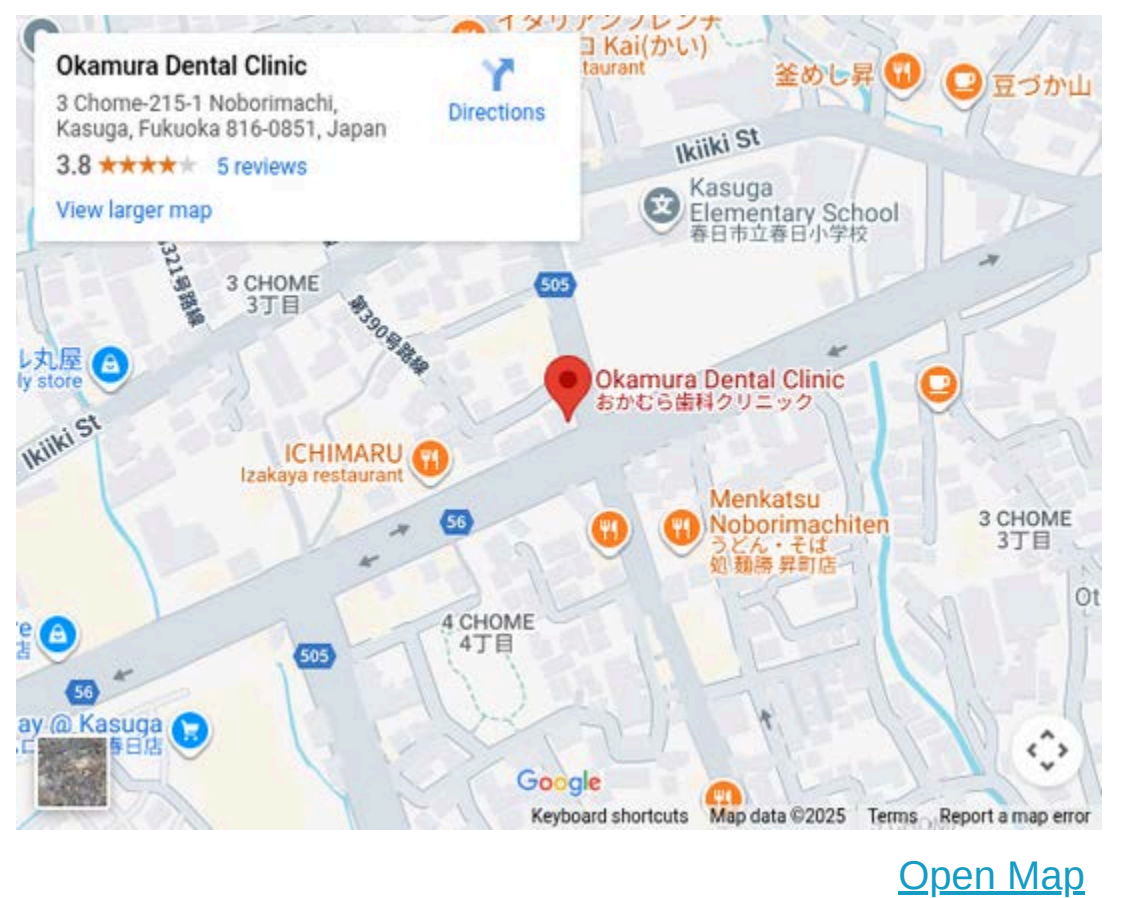
## 2. Iwatani Shika Syonishika

- 📍 5-3-11, Kamioori, Onojo city, Fukuoka, 8160955
- 🕒 Mon, Tue, Wed, Fri, Sat 9:00-13:00, 14:00-18:00
- ☎️ 092-595-1381
- 🌐 <https://www.idcpp.com/>
- 🗣️ **B:** English



## 3. Okamura Dental Clinic

- 📍 3-215-1, Noborimachi, Kasuga city, Fukuoka, 8160851
- 🕒 Mon, Tue, Wed, Fri 9:30-13:30, 15:00-19:30  
Thu, Sat 9:30-13:00, 14:00-17:00
- ☎️ 092-586-2555
- 🌐 <https://okamura-odc.com/>
- 🗣️ **B:** English



## 4. Acrossmall Kasuga Dental Clinic

- 📍 Acrossmall Kasuga 1F, 5-17, Kasuga, Kasuga city, Fukuoka, 8160814
- 🕒 Mon, Wed-Sun, holidays 10:00-13:30, 14:30-19:30
- ☎️ 092-589-7007
- 🌐 <https://www.total-dc-kasuga.com/>
- 🗣️ **C:** English



# Orthopaedic surgery

## 1. Tetsu Clinic

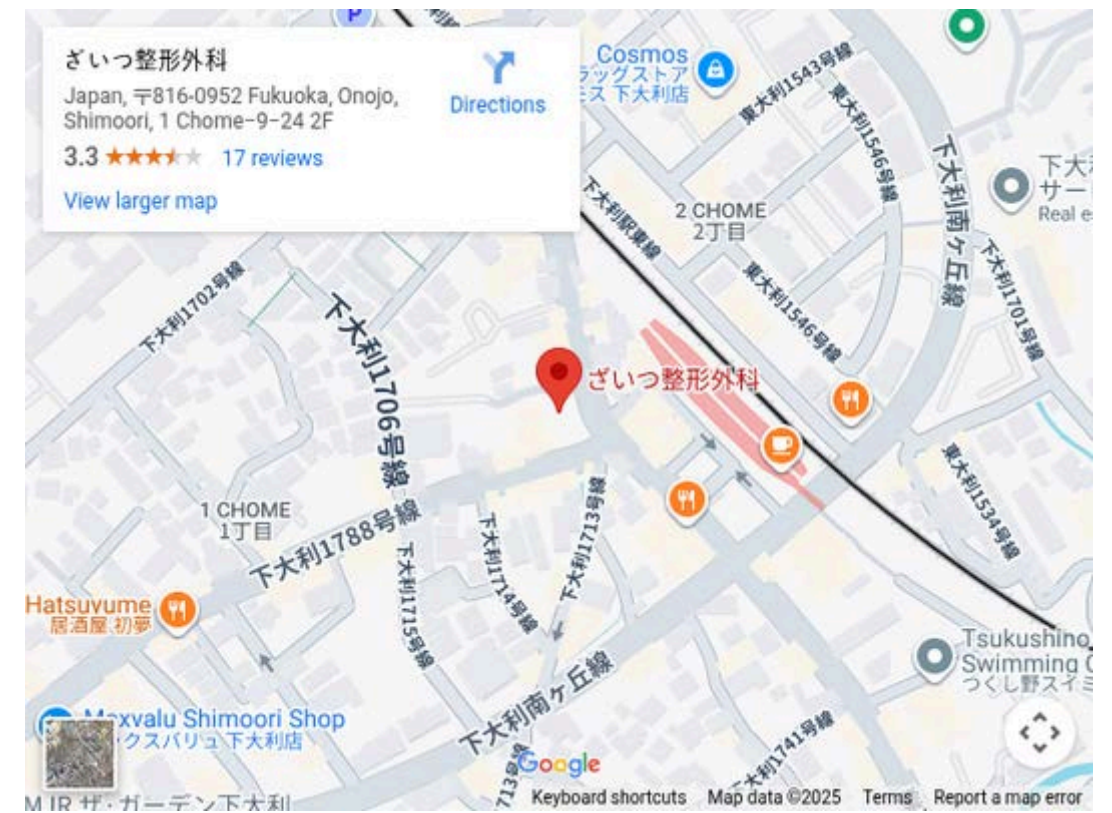
- 📍 1-1-55, Shirakibaru, Onojo city, Fukuoka, 8160943
- 🕒 Mon, Tue, Thu-Sat 8:30-12:30, 14:00-18:00  
Wed 8:30-12:30
- ☎️ 092-501-8161
- 🌐 <http://tetsu-clinic.com/>
- 🗣️ **A**: Cantonese, Mandarin, Taiwanese  
**B**: English



[Open Map](#)

## 3. Zaitzu Orthopaedics Clinic

- 📍 2F, 1-9-24, Shimoori, Onojo city, Fukuoka, 8160952
- 🕒 Mon, Tue, Thu, Fri 9:00-12:30, 14:00-17:30  
Wed, Sat 9:00-12:30
- ☎️ 092-588-1720
- 🌐 <https://zaitzu-oc.com/>
- 🗣️ **B**: English



[Open Map](#)

# Psychosomatic Medicine • Neurology

## 1. Ichikawa Clinic

- 📍 1-1-55, Shirakibaru, Onojo city, Fukuoka, 8160943
- 🕒 Mon, Tue, Thu-Sat 9:00-12:30, 14:00-18:00  
Wed 9:00-12:30
- ☎️ 092-591-5525
- 🗣️ **B**: English

【NOTE】 Internal medicine and gastroenterology are also available.



[Open Map](#)

# Obstetrics & Gynecology

## 1. Jono Ladies Clinic

📍 2-8-1 Ichinoya, Kasuga city, Fukuoka, 8160943

🕒 Mon, Tue, Thu, Fri 9:00 - 12:00, 14:00 - 17:00

Wed 9:00 - 12:00

Sat 9:00 - 13:00

☎️ 092-584-1103

🌐 <https://www.jono-ladies.or.jp/>

🗣️ C: English

**Multilingual voice translation equipment is available**



[Open Map](#)

## Pediatrics

## 1. Yokoyama Children's Clinic

📍 3-36, Kasugabaruhigashimachi, Kasuga city, 8160801

🕒 Mon-Wed, Fri 8:30 - 12:00, 14:30 - 18:00

Thu 8:30 - 12:00

Sat 8:30 - 12:30

☎️ 092-581-1203

🌐 <https://www.yokoyama-cc.com/>

🗣️ B: English



[Open Map](#)